



PC Electric

# CONNECTIONS

MEMBER NEWSLETTER

NO. 25 May/June 2022 Price Free [www.pcemc.org](http://www.pcemc.org)

**A Message From Myron  
Lambert, General Manager**

**Vegetation Management  
Improves Reliability**

**Statement Of  
Assets And Liabilities**





No. 25 May/ June 2022

Connections Magazine is the  
official publication of PC Electric

2506 False River Drive  
P.O. Box 160  
New Roads, LA 70760  
225.638.3751 Phone  
800.738.7232 Toll Free  
www.pcemc.org

## **BOARD OF DIRECTORS**

### **DISTRICT 1**

Al Ewing

### **DISTRICT 2**

Jimmy Ewing, Jr., President

### **DISTRICT 3**

George G. LaCour, Jr., Vice President

### **DISTRICT 4**

Ralph B. Chustz, Sr., Secretary/Treasurer

### **DISTRICT 5**

Brenda Hurst

### **DISTRICT 6**

Eric Elliott

### **DISTRICT 7**

Chris Settoon

## **EXECUTIVE STAFF**

### **Myron A. Lambert**

General Manager

### **Craig Magruder**

Operations Manager

### **James Jewell**

Manager of Finance and Administration

### **Lisanne Labatut**

Executive Administrative Assistant &  
H.R. Manager

### **Chad Nichols**

Safety Training & Projects Coordinator

### **Jill Copeland**

Manager of Member Services and  
Communications

## **PC ELECTRIC STATEMENT OF ASSETS & LIABILITIES AS OF DECEMBER 31, 2021**

### **ASSETS:**

Net Utility Plant	\$39,845,937
Non-Utility Plant	0
Investments in Associated Organizations and Special Funds	3,208,739
Cash	784,571
Accounts Receivable	1,880,008
Material and Supplies	798,411
Other Current and Accrued Assets	2,859,108
Deferred Debits	1,148,700
<b>TOTAL ASSETS</b>	<b>\$50,525,474</b>

### **LIABILITIES AND EQUITY:**

Memberships	\$ 39,600
Patronage Capital	18,329,452
Operating Deficit - Prior Years	(2,790,584)
Operating Margin - Current Year	44,058
Other Margins & Equity	5,760,794
Long Term Debt	25,424,060
Obligations Under Capital Leases	500,056
Other Non-Current Liabilities	136,671
Notes Payable	500,000
Accounts Payable	1,464,779
Consumer Deposits	579,385
Other Current and Accrued Liabilities	537,203
<b>TOTAL LIABILITIES &amp; EQUITY</b>	<b>\$50,525,474</b>

NUMBER OF ACCOUNTS BILLED AS OF DECEMBER 31, 2021	10,604
TOTAL KWH PURCHASED DURING 2021	228,986,095
TOTAL KWH SOLD DURING 2021	217,930,193
TOTAL MILES OF LINE:	
TRANSMISSION	51
DISTRIBUTION	1,068
NUMBER OF FULL TIME EMPLOYEES AS OF DECEMBER 31, 2021	39

## **STATEMENT OF OPERATIONS FOR THE YEAR ENDING DECEMBER 31, 2021**

<b>OPERATING REVENUE</b>	\$24,050,884
<b>OPERATING EXPENSE:</b>	
Cost of Purchased Power	\$14,535,095
Transmission Expense	91,203
Distribution Expense	3,298,931
Consumer Expense	956,657
Administrative Expense	2,079,802
Depreciation Expense	1,651,950
Tax Expense	531,808
Interest Expense	822,846
Miscellaneous Expense	38,534
<b>TOTAL OPERATING EXPENSE</b>	<b>\$24,006,826</b>
Operating Margin	\$ 44,058
Non-Operating Margin	142,487
<b>NET MARGIN</b>	<b>\$ 186,545</b>

**FEELING LUCKY? LOOK FOR YOUR  
ACCOUNT NUMBER TO WIN A BILL  
CREDIT!**



If you see your account  
number published inside this  
issue, call PC Electric by  
June 30, 2022 to receive a  
\$25 credit on your bill. Your  
account number can be found  
on your bill statement.

**GOOD LUCK!**



**A MESSAGE FROM  
MYRON LAMBERT,  
GENERAL MANAGER  
PC ELECTRIC**

2020 was described as an interesting year, highlighted in the early months of the year with an unprecedented pandemic followed by a record-breaking hurricane season with five named storms making landfall on the Louisiana coast. 2021 would not disappoint with the lingering pandemic and Historic Hurricane IDA! Once again, PC Electric met each challenge and continued to serve our member's needs.

I would like to acknowledge and thank the employees of PC Electric. Their preparation, hard work, and dedication overcame the year's challenges, providing safe and reliable power to our members!

PC Electric continues to support economic development (1678105) in all three parishes we serve, Pointe Coupee, West Baton Rouge, and Iberville. We work with the local and regional chambers on potential projects and support local developers on new residential developments. The automated metering project has been approved by the LPSC and will be implemented in mid to late 2022. That will enable PC Electric and our members to utilize technology to improve reliability and provide a world-class customer experience.

In lieu of an annual meeting, postponed due to Covid-19 restrictions in January 2022 and rescheduled in March 2022, only to be canceled due to severe weather, we are including our statement of assets and liabilities in this issue of Connections.

Please monitor [www.pcemc.org](http://www.pcemc.org) and our social media channels for a future date in June 2022 when we will host a Facebook live session and give away the Annual Meeting Door Prizes!!! The entire membership will be eligible for the drawing, and winners will be notified! Thank you again (1695400) for allowing me to serve as your General Manager. I am always accessible and here to serve you. If you have any questions or need assistance, never hesitate to contact our office.



**CRUNCHY RAMEN  
Noodle Salad**



Crunchy ramen noodles are mixed with coleslaw mix and a tangy vinegar dressing to create the easiest side salad recipe ever!

**Ingredients:**

- 2 bags cole slaw mix
- 2 packs Ramen noodles (chicken)
- 1/2 cup chopped green onions
- 1/2 cup sliced almonds
- 1/2 cup sunflower seeds

**Dressing:**

- Taste and add more as you go
- 1/3 cup canola oil
- 1/3 cup white vinegar
- 1/3 cup rice wine vinegar
- 2 tbsp. sugar plus more to taste
- 1 Ramen seasoning packet

**Instructions:**

Mix all salad ingredients, except for ramen noodles, together in a bowl.

Using your hands, crush noodles into pieces into the salad.

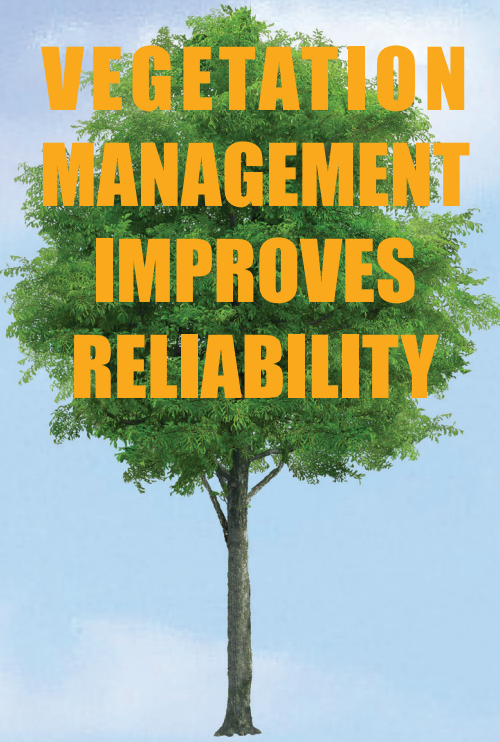
In a separate bowl, whisk together dressing ingredients. Taste (1863900) and adjust sweetness. If too sweet for your taste, add more vinegar. If not sweet enough, slowly increase sugar.

Pour dressing over salad and stir well to evenly coat salad. Cover and refrigerate for at least 2 hours before serving so that noodles can soften.

To make it a meal, add your favorite protein.



# VEGETATION MANAGEMENT IMPROVES RELIABILITY



Trees add beauty, help the environment, and give value to your property. They are a valuable asset in commercial, private, and public landscapes. However, when trees are planted and grow within or near our electric lines, they can present problems. Trees are a major cause of power outages in areas with overhead electric lines. When trees contact live wires (313402) they become conductors of electricity and cause power outages or create dangerous situations for anyone coming in contact with them. Regular trimming to direct growth away from power lines is essential to prevent outages.

PC Electric clears vegetation from its right-of-way and uses herbicide to control and limit regrowth of cleared vegetation. Although we must prune trees, we know that it is not always a popular or attractive solution. Our goal is to be as respectful (790903) to the landscape as possible, while maintaining sufficient line clearance and room for our linemen to work safely on powerlines.

In addition to our right-of-way crews, PC Electric has a valuable partnership with contractor, SolScapes, to trim and remove vegetation to improve reliability for our members and the communities we serve.

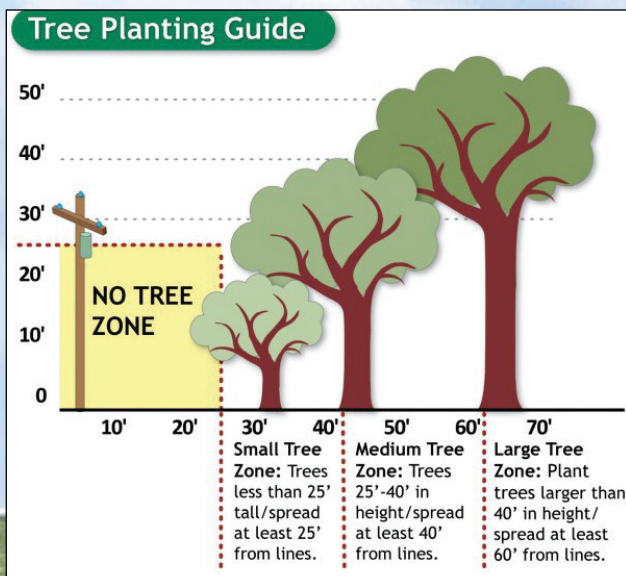
**Before you plant any vegetation, call 811 in advance to have your underground utilities marked. This is a free service.**

## The Right Tree in the Right Place

Look up from where you intend to plant, and see if any power lines are overhead or nearby. Then, consider what that tree will look like several years from now. It may be hard to imagine the small tree you plant today could grow as tall as 100 feet. When planting trees, follow this guide in regards to height zones:

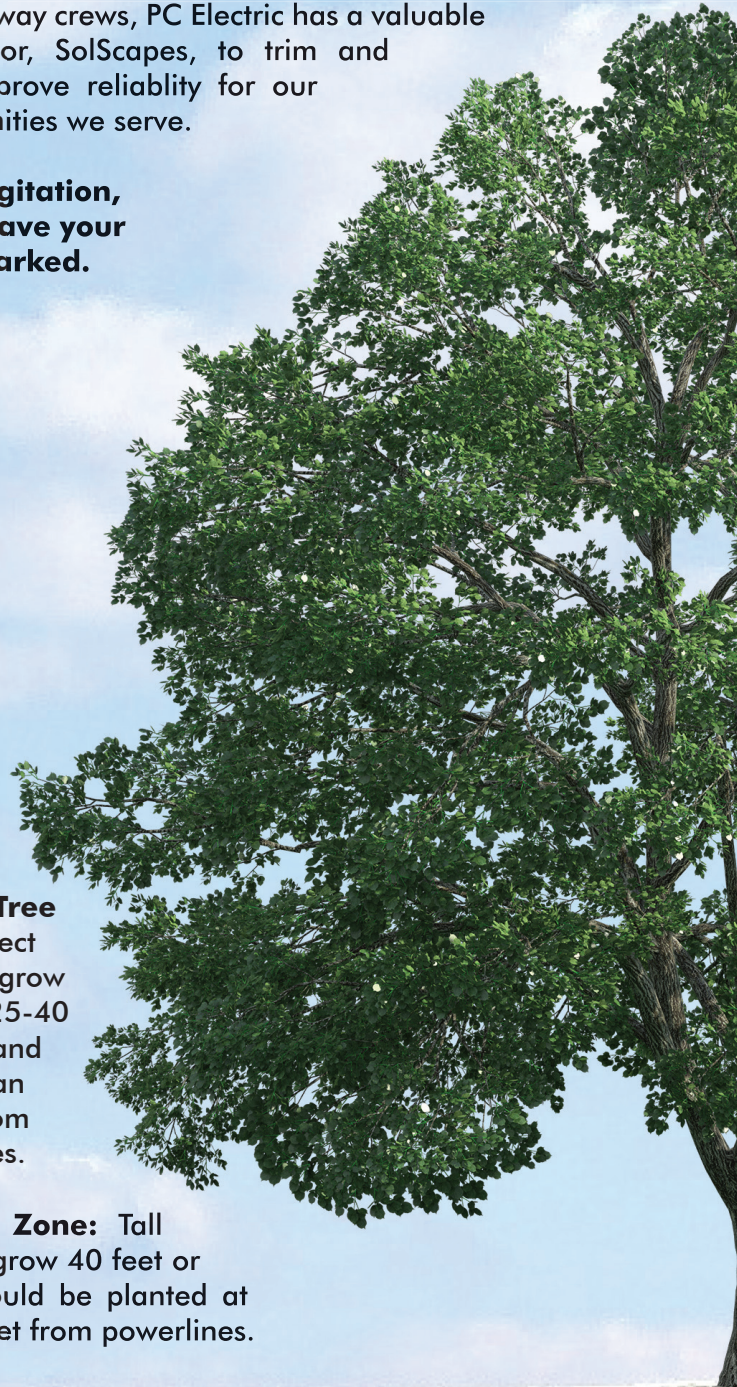
**No to Low Zone:** Trees that will grow to be 25 feet or higher should not be planted in this zone.

**Small Tree Zone:** Plant small trees in this area at least 15 feet from all power lines. Select trees that grow 25 to 40 feet or less.



**Medium Tree Zone:** Select trees that grow between 25-40 feet high and no less than 40 feet from power lines.

**Tall Tree Zone:** Tall trees that grow 40 feet or higher should be planted at least 60 feet from powerlines.

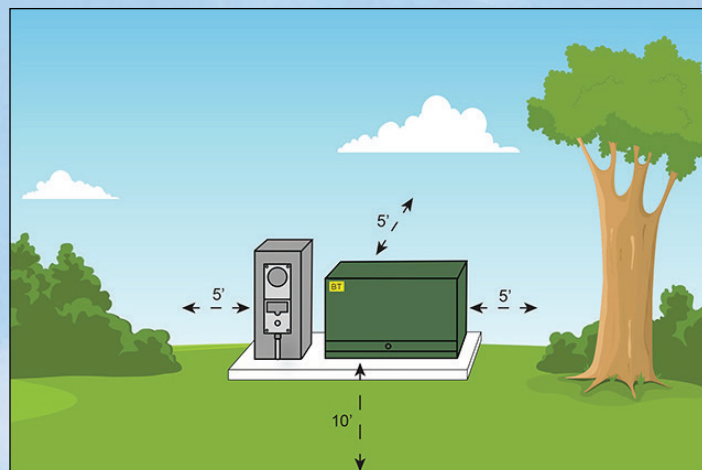




---

If you have underground service and there are pad-mounted transformers near your home, keep shrubs, fences, and other objects at least ten feet away from the front and five feet away from the sides and back of the transformer. Please consider the mature size of your landscaping plants before planting. The transformer's access door should remain completely unobstructed.

---



### Consider these points when selecting trees and their planting locations to help save money on your energy bill:

**Windbreaks block the winter chill** - While shade trees conserve energy in the summer, evergreen trees and shrubs planted to block the wind conserve energy in the winter. Planting pines and other evergreen trees (1601000) to the north of your home can reduce winter wind velocities by 75 percent and possibly save up to 25 percent on heating costs. It's important to know the direction of wintertime prevailing winds. The combination of evergreen trees and shrubs can be used as a barrier to redirect harsh winds away from your home. For best results, the windbreaks should be planted between 30 and 120 feet from your home or the area to be protected.

**Shade trees block summer sun** - Medium and large variety trees provide excellent cooling because they shade your house and yard. This helps cool both outside (2177000) and inside temperatures. Select trees with wide-spreading branches and less-dense shade.

Consider the seasonal sun angles when planting for shade. Homes with large south and west exposures need shade in mid to late afternoon sun.

When planting to shade your air conditioning unit, be careful not to plant too close to the unit blocking the air flow.

It takes time for trees to mature enough to produce results, so start planning as soon as possible.





P.O. Box 160  
New Roads, LA 70760

*We remember you,  
We honor you,  
We salute you,  
We thank you!*

**WE WILL  
NEVER FORGET**

PC Electric will be closed Monday, May 30, 2022 in honor of the Memorial Day holiday. If you need to report an emergency or outage, call 225-638-3751 or report from our website at [www.pcemc.org](http://www.pcemc.org)

**WELCOME TO  
THE TEAM**



**NICHOLAS DESORMES  
APPRENTICE LINEMAN**

**Heading out of town for vacation? Remember to unplug electronics (1946601) that draw a phantom energy load. Some gadgets like TVs, phone chargers, gaming consoles and toothbrush chargers use energy when plugged into an outlet—even when they're not in use.**



**ENERGY  
EFFICIENCY TIP!**

Follow Us on  
Social Media

HELLO!



**FACEBOOK**



**INSTAGRAM**



**TWITTER**

