



PC Electric

CONNECTIONS

MEMBER NEWSLETTER
NO. 27 September/October 2022 Price Free www.pcemc.org



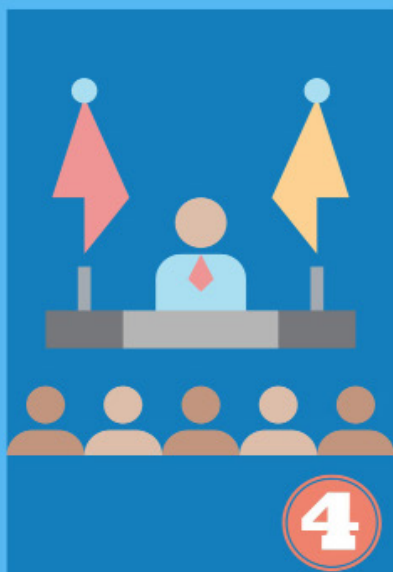
VOLUNTARY & OPEN
MEMBERSHIP



DEMOCRATIC
MEMBER CONTROL

October
is Co-op Month

MEMBERS' ECONOMIC
PARTICIPATION



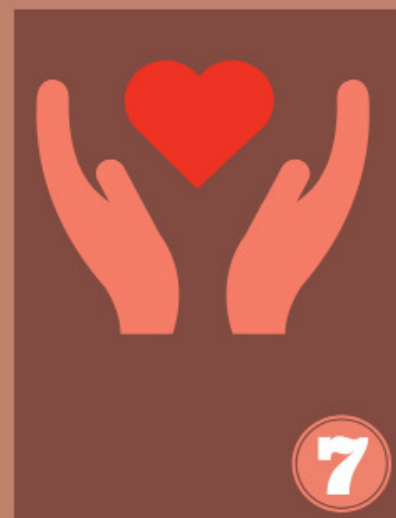
AUTONOMY &
INDEPENDENCE



EDUCATION,
TRAINING &
INFORMATION



COOPERATION
AMONG
COOPERATIVES



CONCERN FOR
COMMUNITY

No. 27 September/October 2022

Connections Magazine is the official publication of PC Electric

2506 False River Drive
P.O. Box 160
New Roads, LA 70760
225.638.3751 Phone
800.738.7232 Toll Free
www.pcemc.org

BOARD OF DIRECTORS

DISTRICT 1

Al Ewing

DISTRICT 2

Jimmy Ewing, Jr., President

DISTRICT 3

George G. LaCour, Jr., Vice President

DISTRICT 4

Ralph B. Chustz, Sr., Secretary/Treasurer

DISTRICT 5

Brenda Hurst

DISTRICT 6

Eric Elliott

DISTRICT 7

Chris Settoon

EXECUTIVE STAFF

Myron A. Lambert

General Manager

Craig Magruder

Operations Manager

James Jewell

Manager of Finance and Administration

Lisanne Labatut

Executive Administrative Assistant &
H.R. Manager

Chad Nichols

Safety Training & Projects Coordinator

Jill Copeland

Manager of Member Services and
Communications

OCTOBER IS NATIONAL CYBERSECURITY MONTH



In today's digital world, cyberattacks are unfortunately nothing new. Cyber criminals can attack on a multitude of levels, from large-scale attacks targeting corporations to smaller phishing attacks aimed to gain an individual's personal information.

October is Cybersecurity Awareness Month, but good cyber hygiene should be practiced year-round. This year's theme is "See Yourself in Cyber" – because we all have a part to play in cybersecurity. When we hear about massive data breaches, it can feel overwhelming and lead us to think we're powerless as individuals to stop cyber criminals.

The truth is, there are several practical steps we can take to safeguard our devices and data. Here are four easy ways to boost your cyber hygiene:

1. **Enable multi-factor authentication.** Also known as two-step verification, multi-factor authentication adds a second step when logging into an account, which greatly increases the security of the account. This second step could include an extra PIN, answering an extra security question, a code received via email or a secure token. This additional step makes it twice as hard for cyber criminals to access your account. Not every account offers multi-factor authentication, but it's becoming increasingly popular.
2. **Use strong passwords and a password manager.** Remember, passwords are the "keys" to your personal home online. Your passwords should always be long, unique and complex. Create passwords using at least 12 characters, never reuse passwords for multiple accounts and use a combination of upper- and lower-case letters, numbers and special characters. Using a password manager will store them easily and securely in one place.
3. **Update software.** It may seem obvious, but regularly updating software is one of the easiest ways to keep your personal information secure. Most companies provide automatic updates and will send reminders so you can easily install the update. If you're not receiving automatic software updates, set a reminder to do so quarterly. Be aware that some cyber criminals will send fake updates; these typically appear as a pop-up window when visiting a website. Use good judgement and always think before you click.
4. **Recognize and report phishing attacks.** Don't take the bait when cyber criminals go phishing. The signs of a phishing attack can be subtle, so take the extra time to thoroughly inspect emails. Most phishing emails include offers that are too good to be true, an urgent or alarming tone, misspellings and poorly-crafted language, ambiguous greetings, strange requests or an email address that doesn't match the company it's coming from.

Cyber criminals are here to stay, but when we all take a risk-based approach to our cyber behavior, we're creating a safer internet for all. Visit www.staysafeonline.org for additional cybersecurity tips.

ENERGY EFFICIENCY TIP!

Our faucets and appliances use a lot of hot water. You can lower your water heating costs by using less hot water in your home. Water heating (2539200) accounts for a large portion of home energy bills.

To save energy (and money!) used for water heating, repair any leaky faucets, install low-flow fixtures and insulate accessible hot water lines. When it's time to purchase a new washing machine or dishwasher, look for models that are ENERGY STAR®-certified

OCTOBER IS COOPERATIVE MONTH



ACE Hardware, State Farm, REI, Land O'Lakes and PC Electric all share something in common: we're all cooperatives.

We may be in different industries, but we all share a passion for serving our members and helping our communities to thrive. In fact, all cooperatives adhere to the same set of seven principles (678301) that reflect our core values of honesty, transparency, equity, inclusiveness and service to the greater community good. October is National Co-op Month, so this is the perfect time to reflect on these principles that have stood the test of time but also provide a framework for the future.

Just like all co-ops, PC Electric was created out of necessity—to meet a need that would have been otherwise unmet in our community. So in 1938, a group of neighbors banded together and organized our electric co-op so everyone in our community could benefit. For a modest membership fee to the co-op, any farmer could get electricity brought to his farm. Neighbors came together to tackle a problem that they all had but couldn't solve alone. They worked together for the benefit of the whole community, and the newly established electric lines helped power economic opportunity in our community.

While this history may be forgotten, key parts of that heritage remain—the focus on our mission and serving the greater good. In this, we include everyone to improve the quality of life and economic opportunity for the entire community. Membership (1838901) is open to everyone in our service territory, regardless of race, religion, age, disability, gender identity, language, political perspective or socioeconomic status.

Our co-op is well suited to meet the needs of our members because we are locally governed. PC Electric's leadership team and employees live right here in the community. Our board of directors, who sets long-term priorities for the co-op, also live locally on co-op lines. Our close connection to this community ensures we get a first-hand perspective on members' priorities, thereby enabling us to make more informed decisions on long-term investments.

As a utility, our mission is to provide safe, reliable and affordable energy to our members. But as a co-op, we are also motivated by service to the community, rather than profits.

Because we are guided by seven cooperative principles, it's not just about dollars—it's about opportunity for all and being fair when engaging with our members. PC Electric is a reflection of our local community and its evolving needs. We view our role as a catalyst for good and making our corner of the world a better place. We serve our community not only by being an essential service, but by helping to power our local economy. Whether through economic development, volunteerism or donations to local causes, we invest in this community because it's our home too.

I think you'll find that most cooperatives bring good people together to make good things happen in the community. We hope you feel that way about us, your local electric co-op.

On behalf of everyone at PC Electric, we're thankful for your membership.

PC Electric and CoBank makes charitable donations to local organizations

PC Electric's board of directors and management are proud to announce the continued partnership with CoBank, a mission-based cooperative lender, in their Sharing Success Program. "This program helps many (1317605) of our local charities and 501(c) organizations. We remain committed to helping build more vibrant rural communities and shared success," says Myron Lambert, PC Electric general manager.

The Sharing Success Program allows cooperatives to apply for grants, matching the contribution of their customers to the charitable organizations of their choosing. This program matches PC Electric's donation of \$1,000 for a total of \$2,000 going to Pointe Coupee Health Services, Iberville Foundation for Academic Excellence, West Baton Rouge Foundation for Academic Excellence, and Pointe Coupee Council on Aging.

"Electric cooperatives are deeply rooted in the communities they serve and are committed to making their communities better places to live, work, and play," says Lambert. He continued "We have a single purpose (1019900) at the co-op, and that is to serve our members in ways that improve their quality of life. The Sharing Success program is yet another tool we can use to support the community."



L to R (Back Row)- Jimmy Ewing, Jr. PCE Board Member Dist. 2, Chris Settoon PCE Board Member Dist. 7, Eric Elliott PCE Board Member Dist. 6, Myron Lambert PCE General Manager, George LaCour, Jr., PCE Board Member Dist. 3 L to R (Front Row) - Ralph B. Chustz, Sr., PCE Board Member Dist. 4, Jeremy Lacombe and Jeanine Thibodeaux representing Pointe Coupee Health Services.



L to R (Back Row)- Jimmy Ewing, Jr. PCE Board Member Dist. 2, Chris Settoon PCE Board Member Dist. 7, Eric Elliott PCE Board Member Dist. 6, Myron Lambert PCE General Manager, George LaCour, Jr., PCE Board Member Dist. 3 L to R (Front Row) - Ralph B. Chustz, Sr., PCE Board Member Dist. 4, Hettie Corville and Donna Parcel representing Iberville Foundation for Academic Excellence



L to R (Back Row)- Jimmy Ewing, Jr. PCE Board Member Dist. 2, Chris Settoon PCE Board Member Dist. 7, Eric Elliott PCE Board Member Dist. 6, Myron Lambert PCE General Manager, George LaCour, Jr., PCE Board Member Dist. 3 L to R (Front Row) - Ralph B. Chustz, Sr., PCE Board Member Dist. 4, Jarja Carville and Glen Daigle representing West Baton Rouge Foundation for Academic Excellence



Becky Bergeron representing Pointe Coupee Council on Aging and Myron Lambert PCE General Manager.

Smart Home Tech Apps

Smart home technologies are continuously improving, but their companion mobile apps are taking convenience to a whole new level. Take a look at some of the latest app functionalities.

1 Smart Thermostat

Apps: Geofencing is a great enhancement for smart thermostat apps. You can set a boundary (2601) with your smartphone and when you leave the boundary, the thermostat switches to away or return mode.

2 Smart Security Apps:

Video doorbells allow you to keep a watchful eye from anywhere. Smart security apps send alerts to signal activity outside your home.

3 Smart Smoke and CO

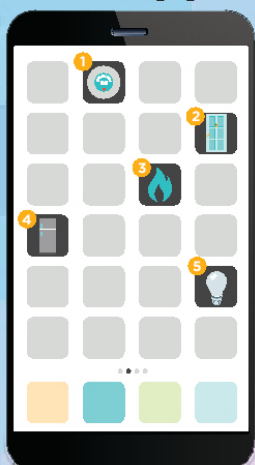
Sensor Apps: These apps have the ability to send alerts, conduct status checks and silence alarms even when you're away.

4 Smart Appliance Apps:

App functionality depends on the appliance. Refrigerator cameras allow you to see what needs to be stocked while grocery shopping, and smart dryers can sense when electric use is high and turn off.

5 Smart Lighting Apps:

Control lighting options for individual rooms, adjust brightness and color, and create lighting scenes based on mood - all from the convenience of your smartphone.



Have you ever heard that “ding” on your phone while driving, alerting us to a text or call coming through, and feel the urgent need to check it? We know we shouldn’t, but we reason that we’re going to make an exception—just this once.

So, why do we indulge in behavior we know to be wrong, dangerous and in many states, illegal? Call it hubris. According to AAA research, most people feel (173200) they are better-than-average drivers. Afterall, we have busy lives and are accustomed to multitasking. But mounds of research and thousands of deaths every year prove otherwise.

As a new school year begins with young drivers and school buses back on the road, now is a good time to remind folks of the dangers of distracted driving.

The reality is that using a phone while driving creates enormous potential for injuries and fatalities. Distractions take a motorist’s attention off driving, which can make a driver miss critical events, objects and cues, potentially leading to a crash.

According to the National Highway Traffic Safety Administration, one of every 10 fatal crashes in the U.S. involves distracted driving, resulting in more than 3,000 deaths annually. This statistic is heartbreaking considering so many of these accidents could easily be avoided if we’d simply put down our phones while driving.

Distracted driving is considered any activity that diverts our attention, including texting or talking on the phone, and adjusting the navigation or entertainment system. Texting is by far one of the most dangerous distractions. Sending or reading one text takes your eyes off the road for an average of five seconds. At 55 mph, that’s like driving the length of an entire football field with your eyes closed.

In addition to refraining from texting while driving, we can help keep the roads safe by moving over for first responders and other emergency vehicles. Additionally, if you see utility crews conducting work near the roadside, you are encouraged you to move over when possible and give them extra space to perform their work safely.

At PC Electric, safety is foremost in everything we do—for our employees and the members of the communities we serve. We routinely remind our crews of the dangers of distracted driving, and we hope you’ll have similar conversations with your teens who may be new to the roadways and are especially susceptible to the lure of technology. Let’s work together to keep everyone safe on the roads. Remember: that text can wait and waiting just might save a life.

**AVOID
DISTRACTIONS
WHILE DRIVING...
IT COULD SAVE A
LIFE!**



ICE CREAM SANDWICH CAKE



This Labor Day, try this Ice Cream Sandwich Cake. You can’t go wrong with layers of ice cream sandwich bars and some of your favorite sundae toppings. Super easy to make, but looks like you labored (pardon the pun) all day over it.

Ingredients

- 20 ice cream sandwiches or enough to line a 9x13 glass dish.
- 2 cups hot fudge topping
- 3/4 cup caramel topping
- 8 ounce tub Cool Whip , thawed
- 1/2 cup mini chocolate chips
- 1/2 cup toffee pieces

Instructions

1. Microwave the fudge and caramel topping for about 15-20 seconds to loosen it and make it spreadable.

2. Line the bottom of a 9x13 baking dish with a layer of the ice cream sandwich bars (10 of them; trim if necessary.)

3. Spread half of the hot fudge, followed by the caramel, and then Cool Whip (2124100) over the sandwiches. Sprinkle on half of the chocolate chips and toffee pieces.

4. Repeat layers.

5. Freeze for about about 1 hour. Cut into squares and serve. Makes up to 15 servings.

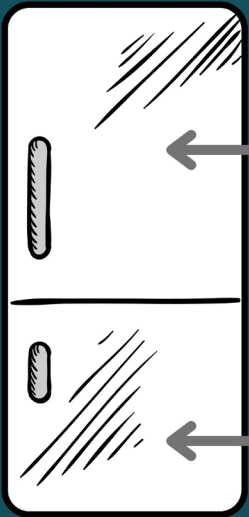
Try mixing it up by using Neapolitan ice cream sandwiches or using different types of candies or toppings such as M&M’s or sprinkles.



P.O. Box 160
New Roads, LA 70760

Keep Food Safe During and After a Power Outage

Refrigerated or frozen foods may not be safe to eat after a power outage. Use these tips to minimize food loss and reduce risk of illness.



4

Refrigerated food will last four hours. After four hours, place refrigerated foods in a cooler with ice.

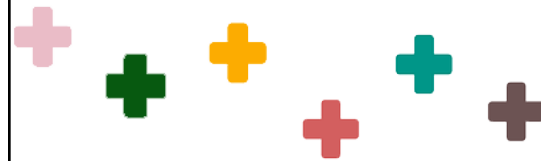
24 OR 48

Food in a half-full freezer will last 24 hours. Food in a full freezer will last 48 hours.

Food Safety Tips

1. Keep refrigerator and freezer doors closed as much as possible.
2. Throw out any food with an unusual odor, color or texture.
3. Throw out perishable food in your refrigerator after four hours without power or a cold source (like a cooler with ice).

When in doubt, throw it out!



Follow us on social media:



**FEELING LUCKY?
LOOK FOR YOUR
ACCOUNT NUMBER
TO WIN A BILL CREDIT!**



If you see your account number published inside this issue, call PC Electric by October 31, 2022 to receive a \$25 credit on your bill. Your account number can be found on your bill statement.

GOOD LUCK!

Notice of Nominating Committees, Districts 3 and 5

The PC Electric nominating committees for Districts 3 and 5 will meet Tuesday, November 1, 2022 at the PC Electric Office at 2506 False River Drive in New Roads.

The purpose of these committee meetings is to nominate candidates from PC Electric Districts 3 and 5 to run for seats on the Board of Directors of the cooperative.

The following PC Electric members appointed by the PC Electric Board at a special board meeting on Wednesday, September 7, 2022 have agreed to serve on the nominating committees. The committees will meet on November 1 at the times shown below:

District 3—9:00 a.m.

Mr. Fred Gueho
P.O. Box 23
Fardoche, LA 70732-0090

Lisa Robillard
P.O. Box 376
Morganza, LA 70759-0353

Mr. Sidney J. LaCoste, II
P.O. Box 159
Morganza, LA 70759-0159

District 5—9:00 a.m.

Risa Patin
11826 Section Road
Port Allen, LA 70767

Dorothy Schapatone
3954 Treuil Rd.
Port Allen, LA 70767

Rayfield Lewis
15236 Russell Lane
Glynn, LA 70736